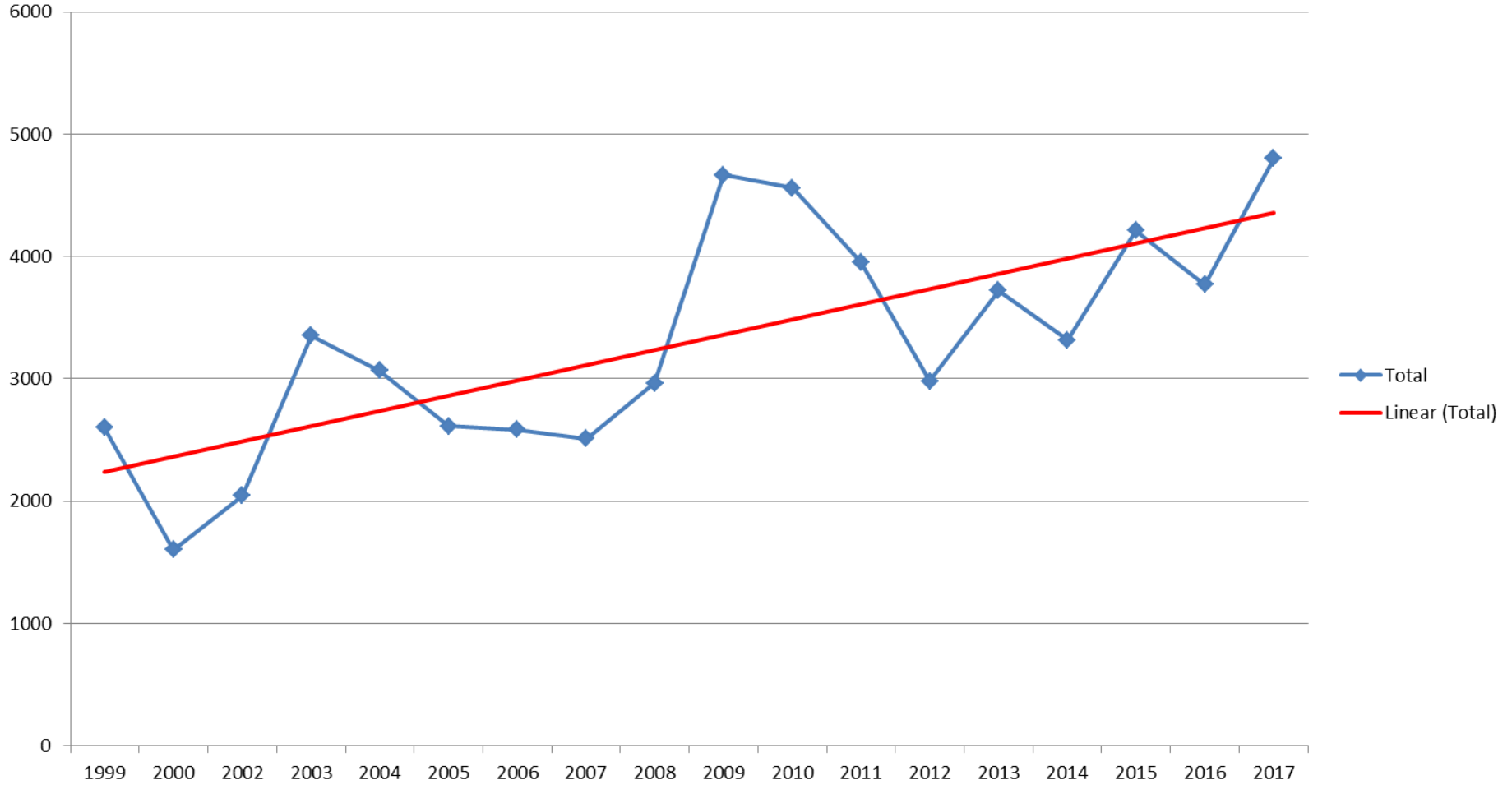


Site species

Sum of adj total

$$y = 124.7x + 2110.5$$
$$R^2 = 0.531$$

species (All)

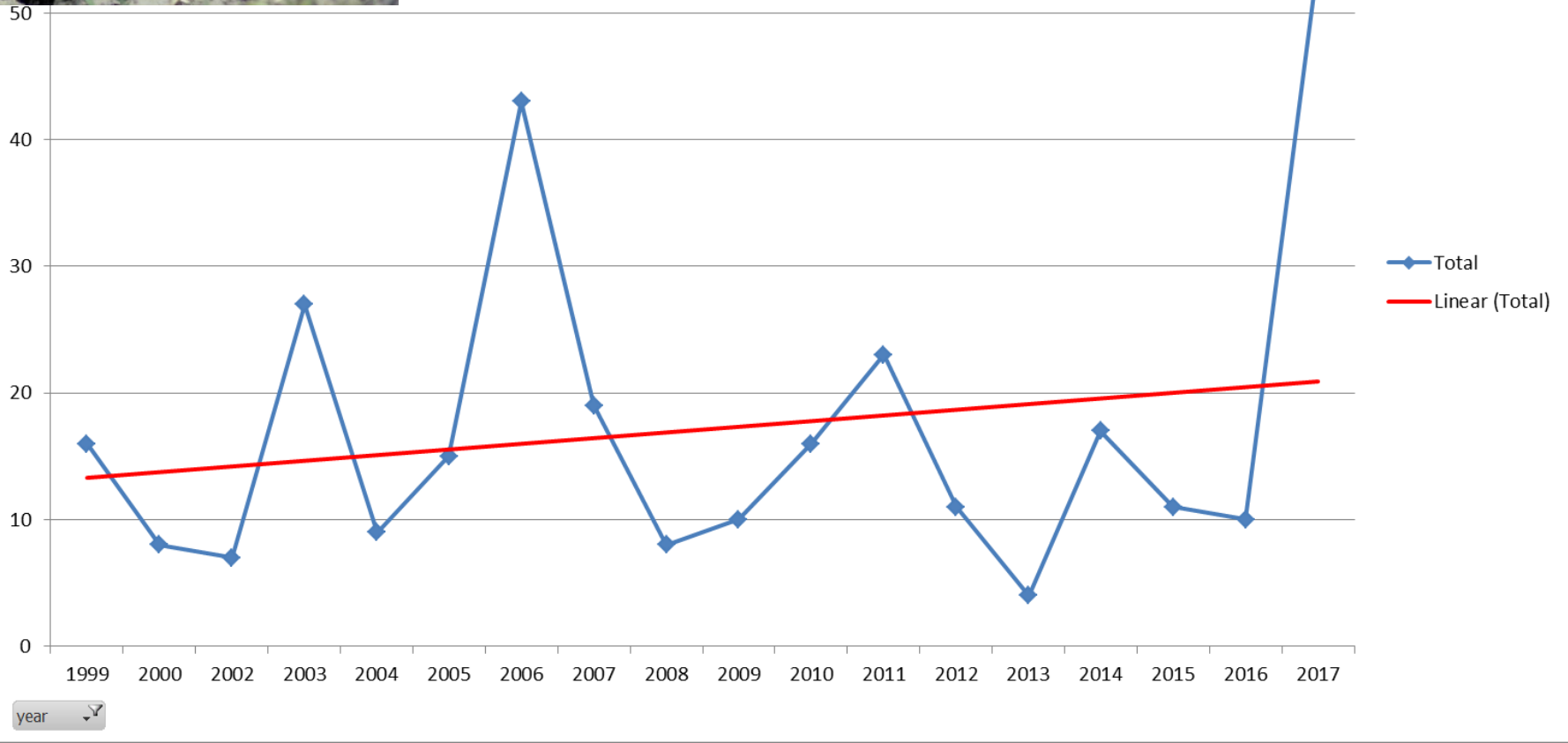


year



species Red Admiral

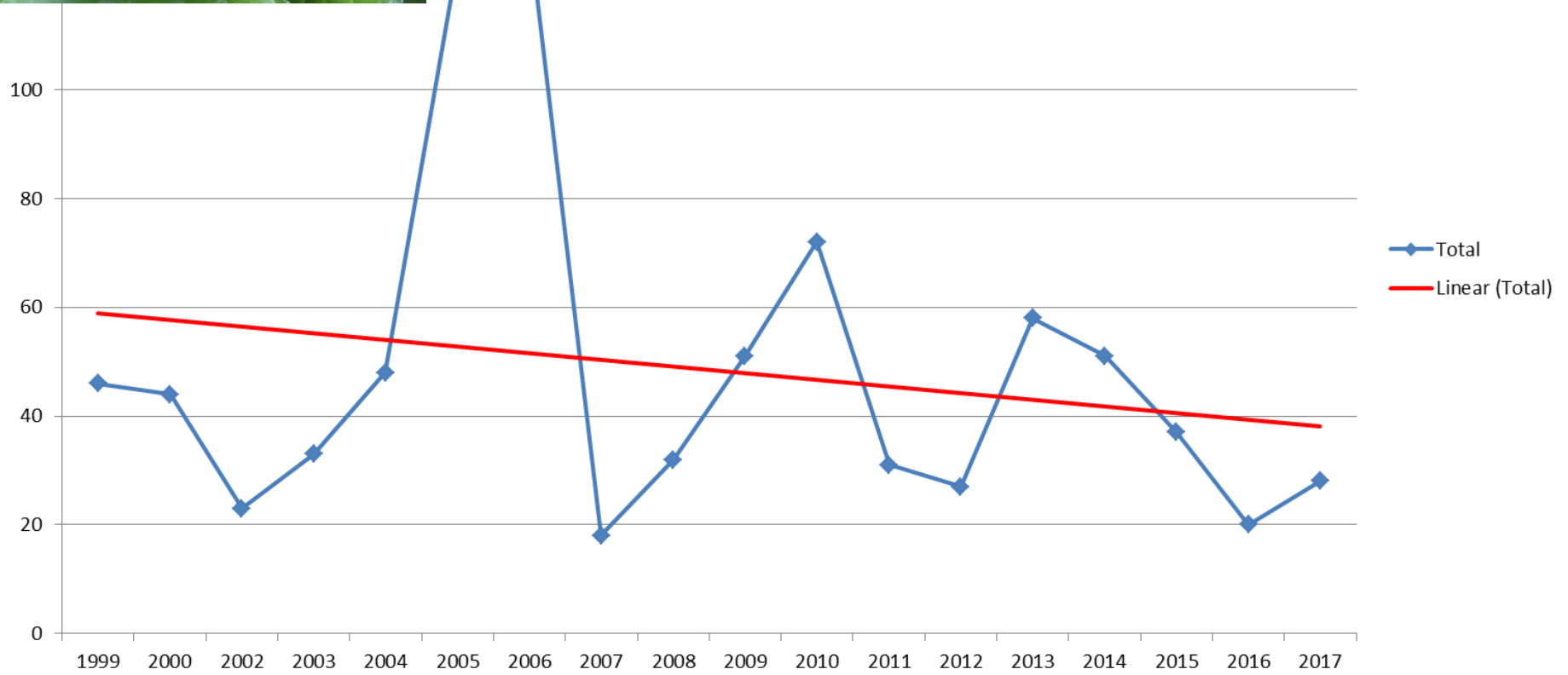
$$y = 0.452x + 12.817$$
$$R^2 = 0.0347$$





species White Admiral

$$y = -1.2219x + 60.052$$
$$R^2 = 0.0423$$

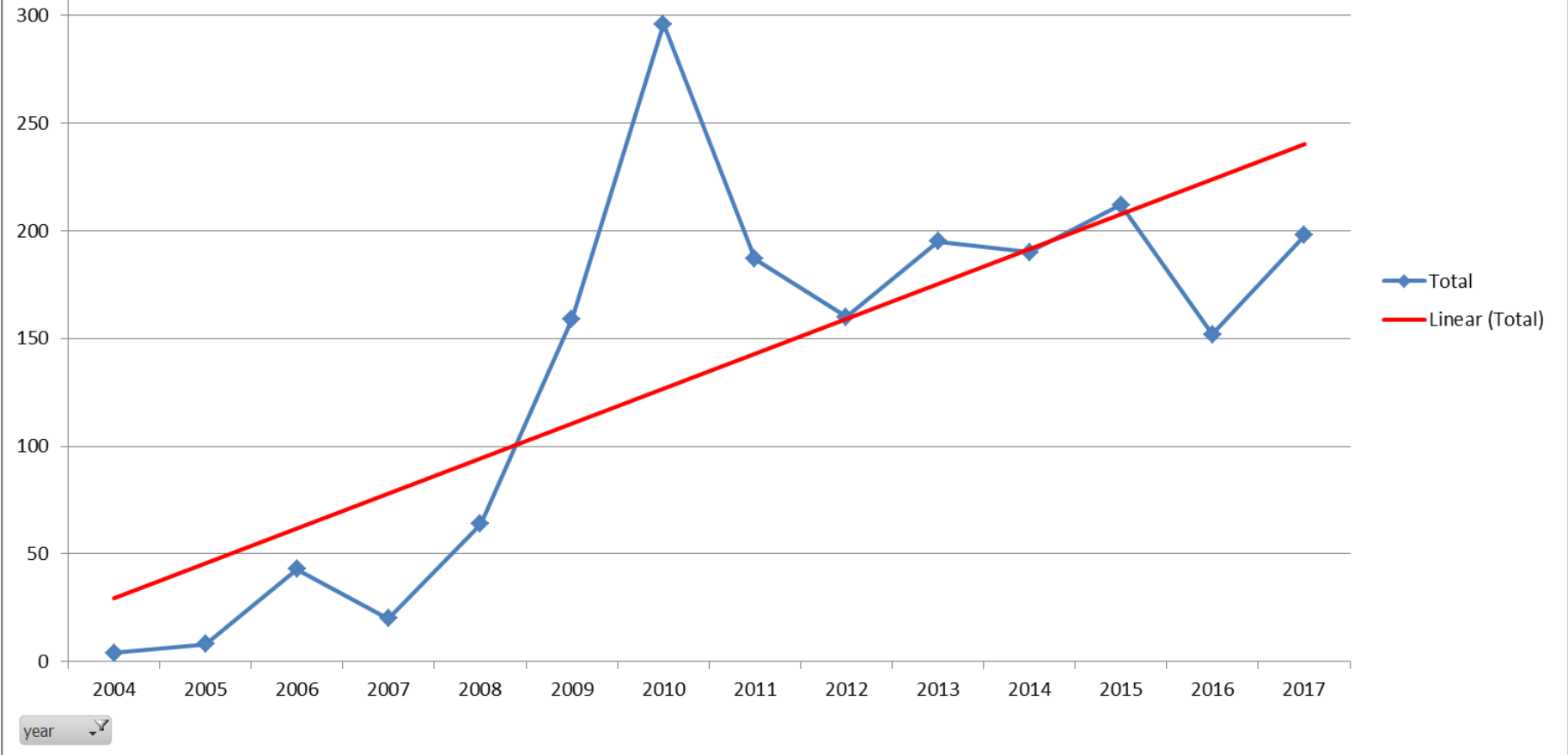


year



$$y = 16.189x + 13.44$$
$$R^2 = 0.559$$

species Silver-washed Fritillary



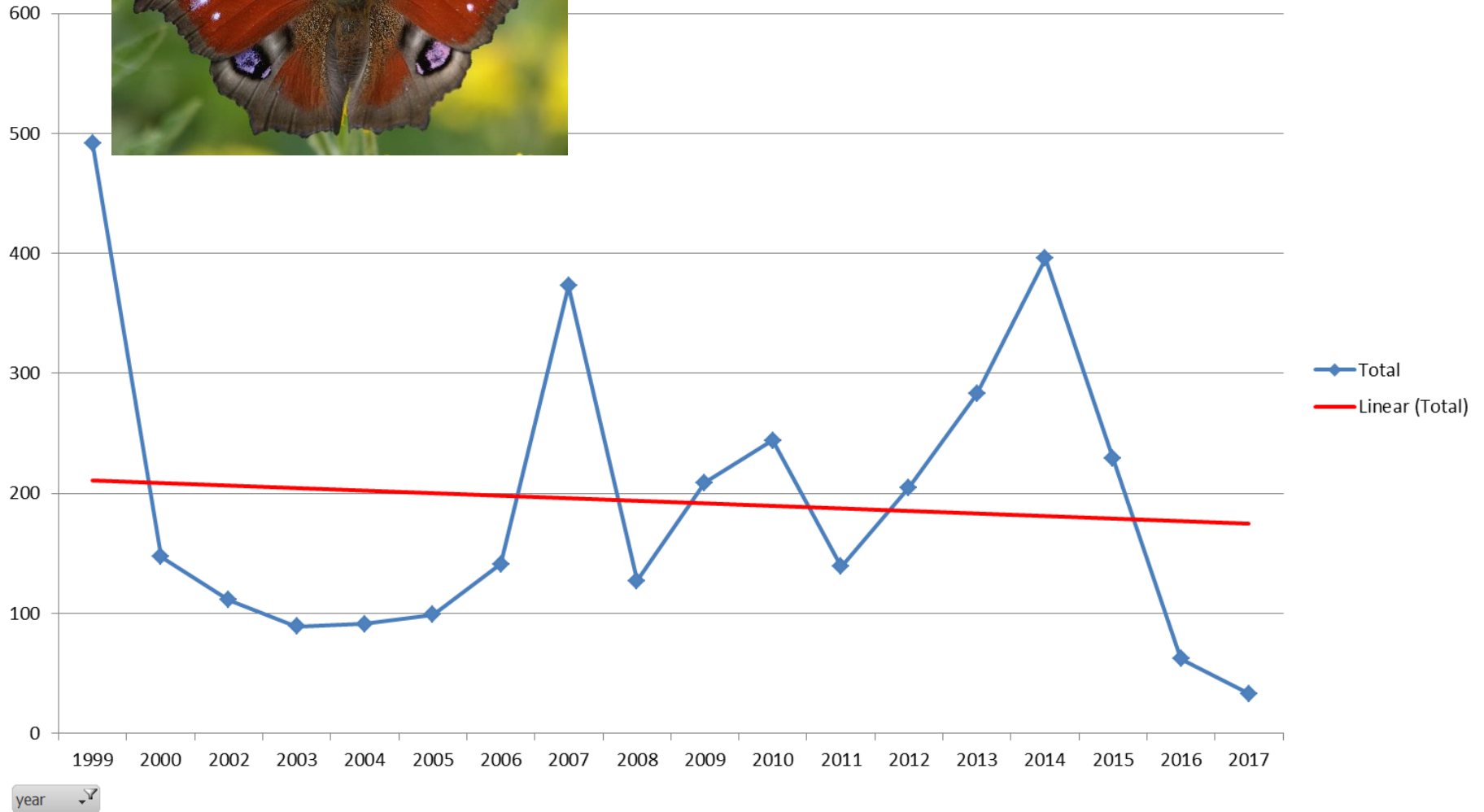
Site ▼ spe

Sum of adj to



species Peacock

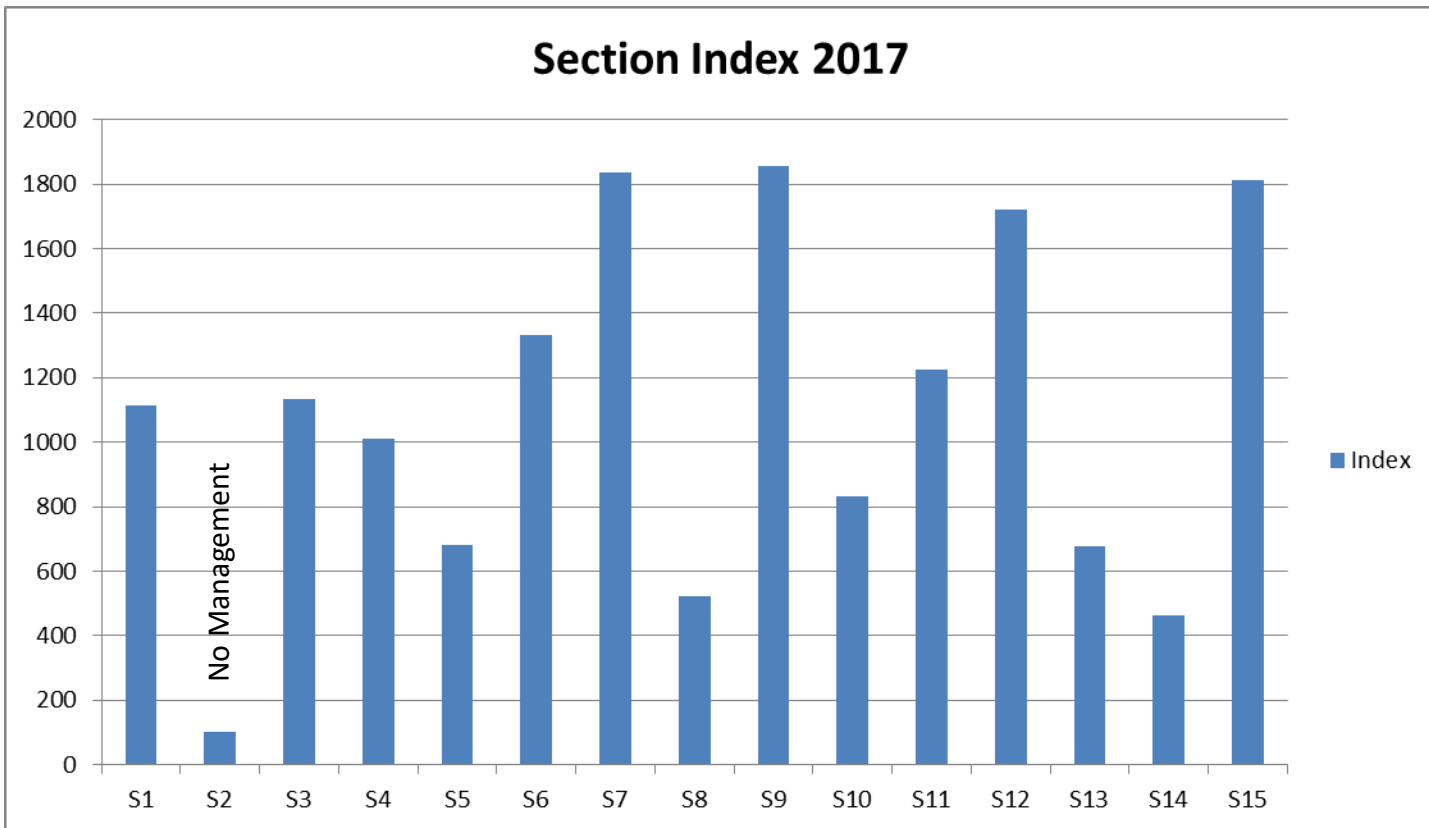
$$y = -2.0764x + 212.5$$
$$R^2 = 0.0078$$



year ▼

Grafton Wood Section Analysis

Based on the number of butterflies per 100 metres – the index calculated on ride 2 = 100 which has no management



Ride Numbers

